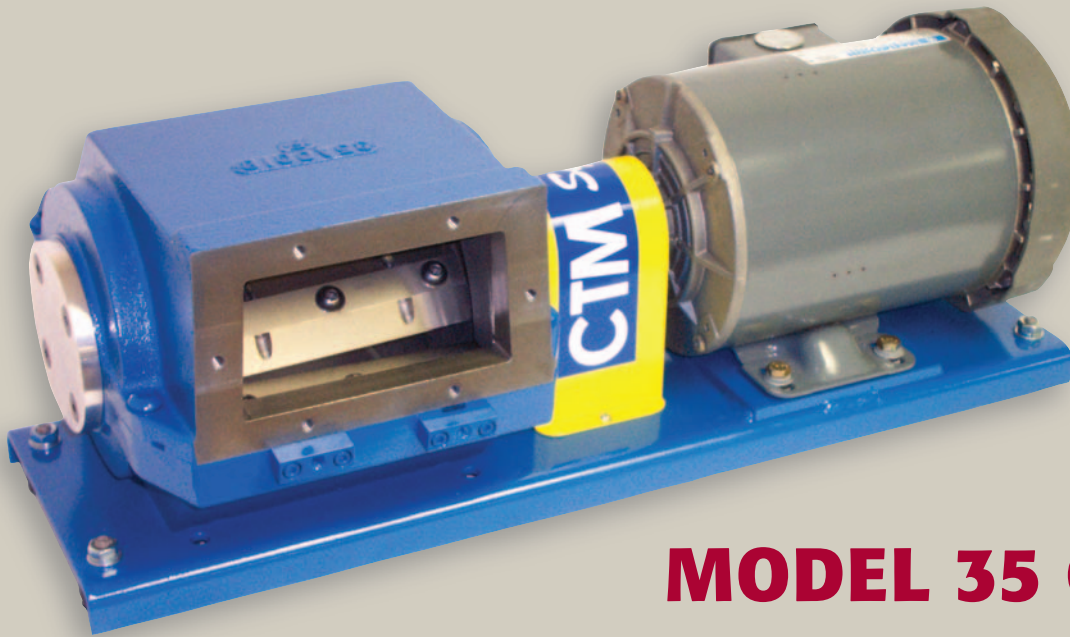


COST-EFFECTIVE SOLUTIONS *for Material Waste Handling Problems*

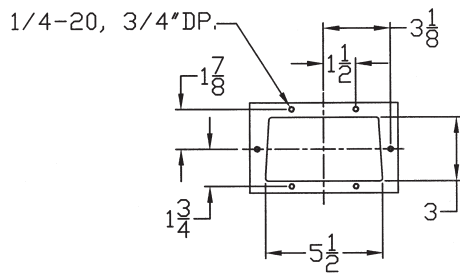


MODEL 35 CUTTER **STANDARD AND HIGH PRECISION MODELS**

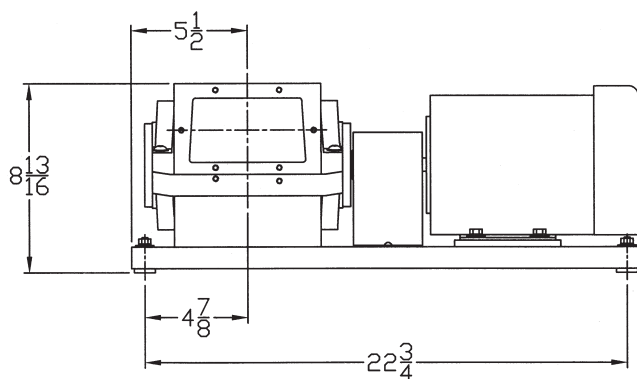
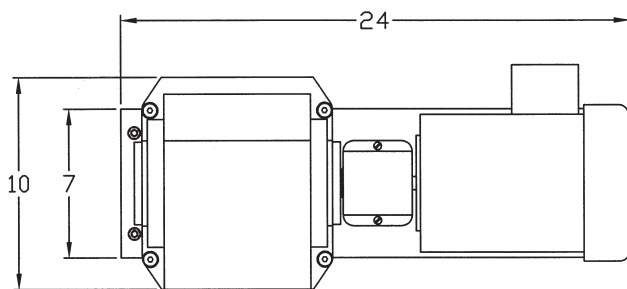
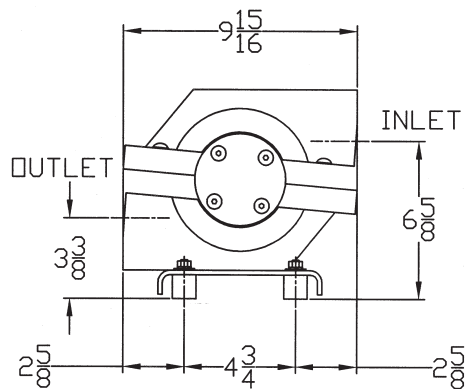
Designed and manufactured by CTM Systems, Inc., the Model 35 Cutter features the latest advances in the overall capability of trim cutters in the Converting Industry market today. Available in two models, our standard Model 35P Cutter will precisely cut material as thin as .001 inch (.0254 mm) and our high precision Model 35HP Cutter will precisely cut film as thin as .0005 inch (.0127 mm).

F E A T U R E S

- Competitively priced
- One week shipment for standard applications
- Compact motor/cutter assembly
- Durable cast iron cutter housing and hood available with optional non-stick coating to accommodate pressure sensitive adhesive trim and label stock applications
- Dynamically balanced ductile iron rotor designed to eliminate wrapping
- Split bearing bore design for easy rotor removal
- Innovative, dual edged rotor and bed knives, lengthening knife life
- Knives require only surface grinding on standard model, reducing maintenance costs and downtime
- Direct drive base plate mounted motor
- Motor options: single phase and nonstandard voltages, variable frequency drive, gear reducer, brake kit and washdown duty
- Cutter features precision bearings, sealed and lubricated, mounted outboard to the rotor
- Knife sharpening service and replacement knives are available upon request



INLET AND OUTLET
FLANGE DIMENSIONS



MODEL 35 CUTTER

TECHNICAL SPECIFICATIONS

CUTTER

- Cast iron housing and hood
- The cutter inlet and discharge are the same size, 3" high X 5" wide
- Dynamically balanced ductile iron rotor
- Standard knife material is D-2 tool steel. Tungsten carbide coated knives are also available
- Precision bearings sealed and lubricated
- Flexible coupling sized to prevent severe damage in case of sudden rotor deceleration
- Vibration isolating mounts supplied with base plate

DRIVE

- 3/4 – 2 hp TEFC, direct drive motor, meeting all commonly accepted motor specifications
- Motor is available in speeds of 1200, 1800 and 3600 rpm
- Motor bearings sealed and lubricated

Locally Represented By:

CTM *Systems, Inc.*

Custom Trim Management

3369 Gun Club Rd., Nazareth, PA 18064

484 285-0211 / **TOLL FREE: 877-493-5800** / FAX: 484 285-0214

email: info@ctmsystemsinc.com / www.ctmsystemsinc.com